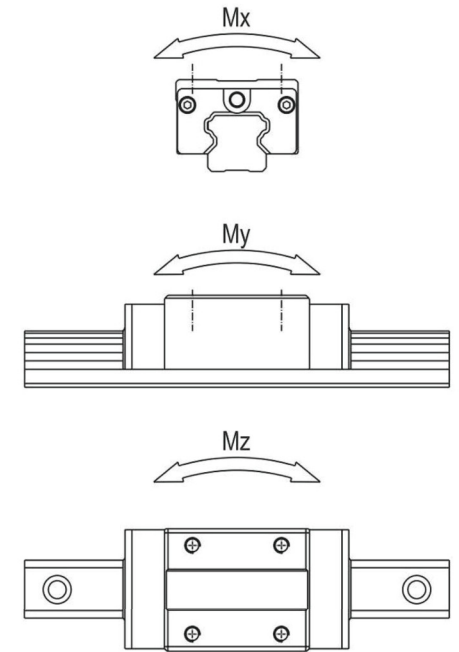
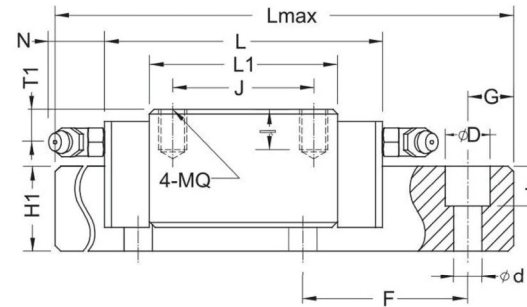
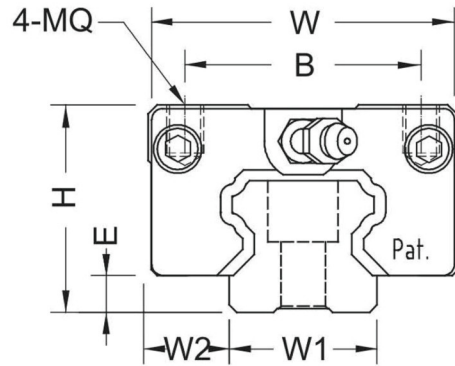
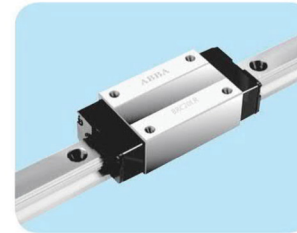
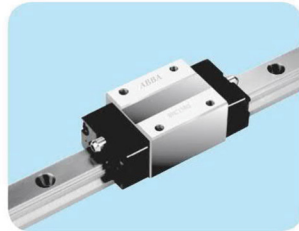


1.22 BRC-R0/LR, BRD-R0/LR



Model No.	Assembly (mm)				BR block (mm)					BR rail (mm)					
	H	W	W2	E	L	BxJ	MQxI	L1	Oil hole	T1 (N)	W1	H1	F	dxDxh	
BRC15R0 BRD15R0	28	34	9.5	4.6	66 56	26x26	M4x6	40	∅ 3	8.3	5	15	14	60	4.5x7.5x5.8
BRC20R0 BRD20R0	30	44	12	5	77.8	32x36	M5x8	48.8	M6x1	7	15.6	20	18	60	6x9.5x9.0
BRC20LR BRD20LR					67.8										
					92.4										
					82.4										
BRC25R0 BRD25R0	40	48	12.5	7	88	35x35	M6x10	57	M6x1	11.8	15.6	23	22	60	7x11x9.5
BRC25LR BRD25LR					78										
					110.1										
					100.1	35x50	79.1								
BRC30R0 BRD30R0	45	60	16	9	109	40x40	M8x13	72	M6x1	10	15.6	28	26	80	9x14x12.5
BRC30LR BRD30LR					99										
					131.3										
					121.3	40x60	94.3								
BRD35R0 BRD35LR	55	70	18	9.5	109	50x50	M8x13	80	M6x1	15	15.6	34	29	80	9x14x12.5
					134.8	50x72		105.8							
BRD45R0 BRD45LR	70	86	20.5	14	138.2	60x60	M10x16.5	105	M8x1	18.5	16	45	38	105	14x20x17.5
					163	60x80		129.8							

Model No.	Ref. Data (mm)		Basic Load Rating (Kgf)		Static Moment (Kg*m)			Weight	
	Lmax	G	(C)	(Co)	Mx	My	Mz	Block(Kg)	Rail(Kg/m)
BRC15R0 BRD15R0	4000	20	850	1350	10.1	6.8	6.8	0.19	1.4
BRC20R0 BRD20R0	4000	20	1400	2400	24	14.6	14.6	0.31	2.6
BRC20LR BRD20LR			1650	3000	30	23.8	23.8	0.47	
BRC25R0 BRD25R0			1950	3200	36.8	22.8	22.8	0.45	
BRC25LR BRD25LR	4000	20	2600	4600	52.9	45.5	45.5	0.56	3.6
BRC30R0 BRD30R0			2850	4800	67.2	43.2	43.2	0.91	
BRC30LR BRD30LR	4000	20	3600	6400	89.6	75.4	75.4	1.2	5.2
BRD35R0 BRD35LR			3850	6200	105.4	62	62	1.5	
			4800	8300	141.1	109.8	109.8	1.9	
BRD45R0 BRD45LR	4000	22.5	6500	10500	236.3	137.8	137.8	2.3	12.3
			7700	13000	292.5	210.9	210.9	2.8	

Note: BR35 and BR45 are not equipped with self-lubricant parts.